

MTBA - National League 2019



Oil Pattern Distance: **41 Feet**
 Forward Oil Total: **16.35 mL**
 Forward Boards Crossed: **327 Boards**

Reverse Brush Drop: **34 Feet**
 Reverse Oil Total: **9.85 mL**
 Reverse Boards Crossed: **197 Boards**

Oil Per Board: **50 uL**
 Volume Oil Total: **26.2 mL**
 Total Boards Crossed: **524 Boards**

	Start	Stop	Loads	Speed	Crossed	Start	End	Feet	T.Oil
1	2L	2R	4	14	148	0.0	5.9	5.9	7400
2	8L	8R	1	14	25	5.9	7.8	1.9	1250
3	9L	9R	2	18	46	7.8	12.9	5.1	2300
4	10L	10R	3	18	63	12.9	20.5	7.6	3150
5	12L	12R	1	18	17	20.5	23.0	2.5	850
6	13L	13R	1	18	15	23.0	25.5	2.5	750
7	14L	14R	1	18	13	25.5	28.0	2.5	650
8	2L	2R	0	22	0	28.0	34.0	6.0	0
9	2L	2R	0	30	0	34.0	41.0	7.0	0

Conditioner:
Type In or Select One

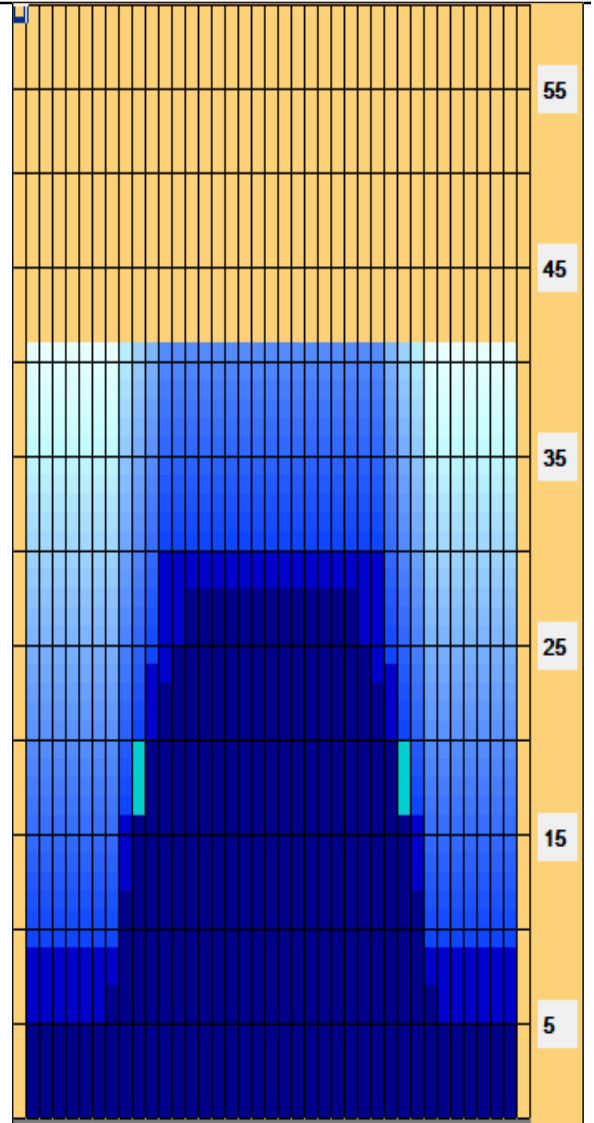
TransferType:
Type In or Select One

Forward
Reverse
More

	Start	Stop	Loads	Speed	Crossed	Start	End	Feet	T.Oil
1	2L	2R	0	30	0	41.0	30.0	-11.0	0
2	12L	12R	2	22	34	30.0	23.8	-6.2	1700
3	11L	11R	3	18	57	23.8	16.2	-7.6	2850
4	9L	9R	3	18	69	16.2	8.6	-7.6	3450
5	2L	2R	1	14	37	8.6	6.7	-1.9	1850
6	2L	2R	0	14	0	6.7	0.0	-6.7	0

Forward
Reverse
More

- Forward
- Reverse
- Combined
- Buff



Item	3L-7L:18L-18R	8L-12L:18L-18R	13L-17L:18L-18R	18L-18R:17R-13R	18L-18R:12R-8R	18L-18R:7R-3R
Description	Outside Track:Middle	Middle Track:Middle	Inside Track:Middle	Middle: Inside Track	Middle:Middle Track	Middle:Outside Track
Track Zone Ratio	4.4	1.62	1.01	1.01	1.62	4.4

